

Items **Accepted** at ODC:



	Price
Computer Towers*, Desk Top Copiers, Cables, External Drives, Flat Panels, Keyboards, TV's, Laptops, Mice, Modems, Desk Top Printers, Scanners, Splitters	No Charge
Televisions or Monitors - LCD/LED and CRT/tube type - 27" or smaller	\$10.00 each
Televisions or Monitors - CRT/tube type - Larger than 27" and all Console Televisions	\$30.00 each
Full Size Copiers/Printers and Projection TV's	\$55.00 each

*A \$7.00 fee applies if hard drive destruction is requested. A certificate of destruction will be mailed upon completion of destruction.

* Prices subject to change

ODC Will Also **Accept** at No Cost:

- Phones (including cell)
 - Fax machines
 - Pagers
 - Small/Medium Servers
- Fees apply for larger servers*



Items can be dropped at the
Main Entrance of ODC's facilities
Monday through Friday
8am to 3pm

Fees are payable at time of drop off
Make checks payable to ODC

For more information about ODC's

Electronic Recycling Program

Rick Bakovka
ODC - Wisconsin Rapids
1191 Huntington Avenue
Wisconsin Rapids, WI 54494
Phone: 715-424-2750 ext 7122
Email: r_bakovka@odcinc.com

Chuck Summers
ODC - Marshfield
2406 East 21st Street
Marshfield, WI 54449
Phone: 715-387-4682 ext 234
Email: c_s_u_m_m_e_r_s@odcinc.com

Updated September 2010

ELECTRONIC
RECYCLING
PROGRAM AT **ODC**



ODC is a **Wisconsin Registered E-Cycle Collector and Recycler.**



ODC is a Wisconsin Registered E-Cycle Collector and Recycler.



THE LAW

Wisconsin's electronics recycling law establishes a collection and recycling system in Wisconsin for certain consumer electronic devices discarded by households and K-12 public schools, and bans landfilling or incineration of these devices in Wisconsin.

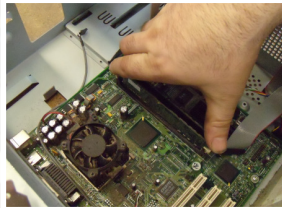
Under the law, manufacturers may not sell covered electronic devices (CEDs) to Wisconsin households or K-12 public schools unless that manufacturer does the following:

- Registers annually with the DNR and reports its recycling target for the program year
- Arranges for the collection and recycling of eligible electronic devices
- Submits required reports

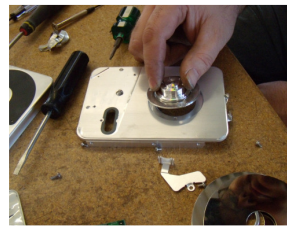
Wisconsin's electronics recycling law bans the local landfills from accepting several types of electronics as of September 1, 2010. As a result, ODC and its partners are proud to provide central Wisconsin with a place to take these items.

To learn more about the ban visit dnr.wi.gov/ecyclewisconsin.

ODC is proud to provide Central Wisconsin with an environmentally friendly option for disposal of electronic equipment.



Computer towers and equipment are disassembled on-site at ODC, and hard drives are removed.



After disassembly, parts are sent to our recycling partners through a down stream process for further processing. Partners of ODC's recycling program are *Midwest Recyclers, LLC* and *Express Recycling*, and are Wisconsin Registered E-Cycle Collectors and Recyclers.

ODC and our recyclers will break down your electronics, reuse or recycle safe materials, and properly manage hazardous chemicals or wastes. This successful partnership makes us a local recycling connection for all of central Wisconsin.



ODC will do local pick-ups for loads of 25 or more units. Pick-ups will be made by appointment only - loads need to be secured to a pallet or otherwise contained.

To make arrangements, contact ODC at 715.424.2750 ext 7122.

